



# Tips for Your First Research Paper

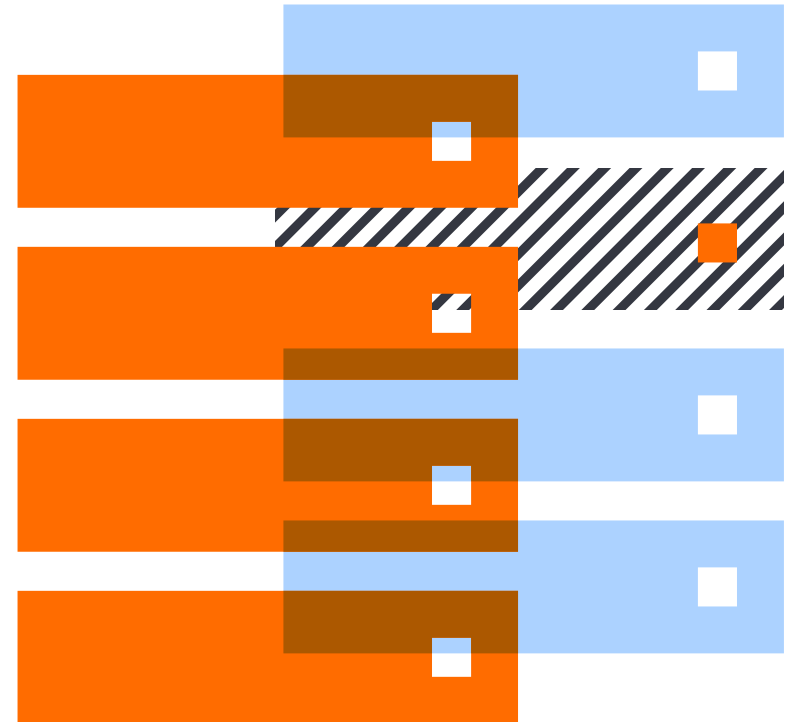
## - From Proposal to Publish

**Dr. Sophia ZHANG**  
Research Intelligence  
Customer Consultant  
[Sophia.zhang@elsevier.com](mailto:Sophia.zhang@elsevier.com)

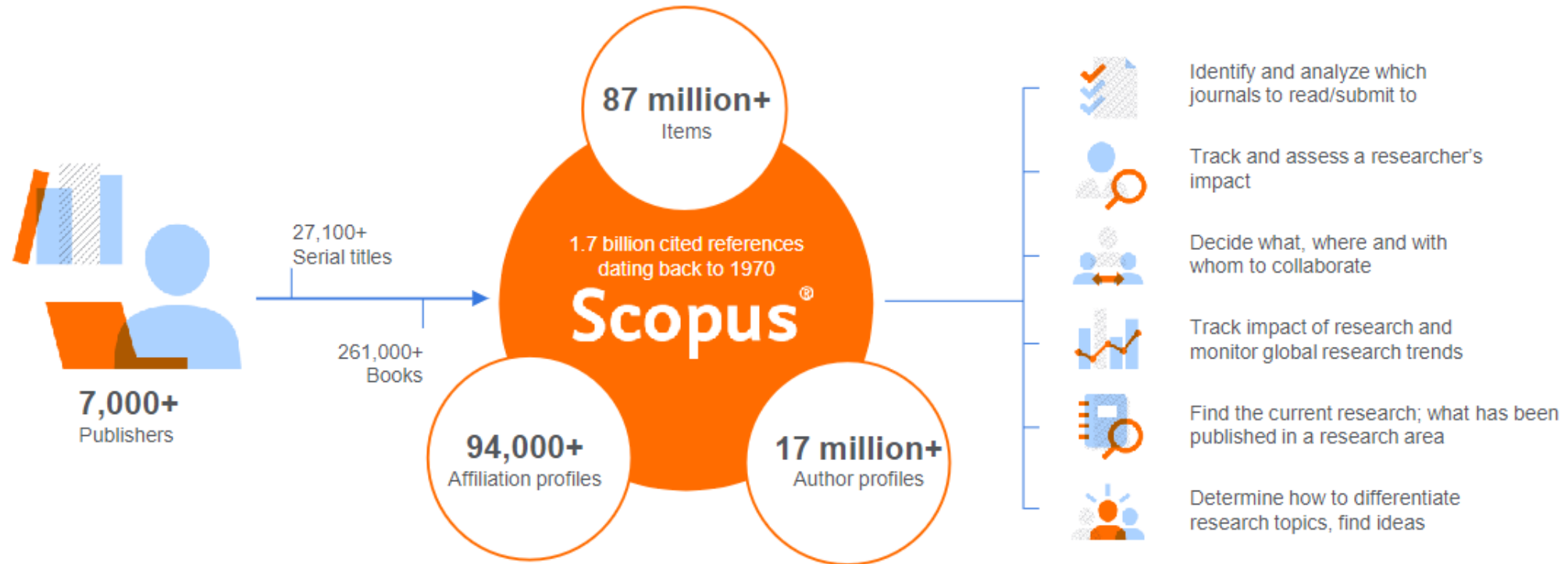


# Contents

- One-click understanding & following cutting-edge research topics
- Manage your academic “name card” – Scopus Author Profile
- “Academic ChatGPT” – Scopus AI for your research



**Scopus** uniquely combines a comprehensive, curated abstract and citation database with enriched data and linked scholarly content.



Quickly find relevant and trusted research, identify experts, and access reliable data, metrics and analytical tools to support confident decisions around research strategy – all from one database and one subscription.

# Navigate to Scopus Search



Start exploring

Discover the most reliable, relevant, up-to-date research. All in one place.

**Basic & advanced Search**

Documents Authors **Researcher Discovery** Affiliations

Search tips ?

Search within  
Article title, Abstract, Keywords

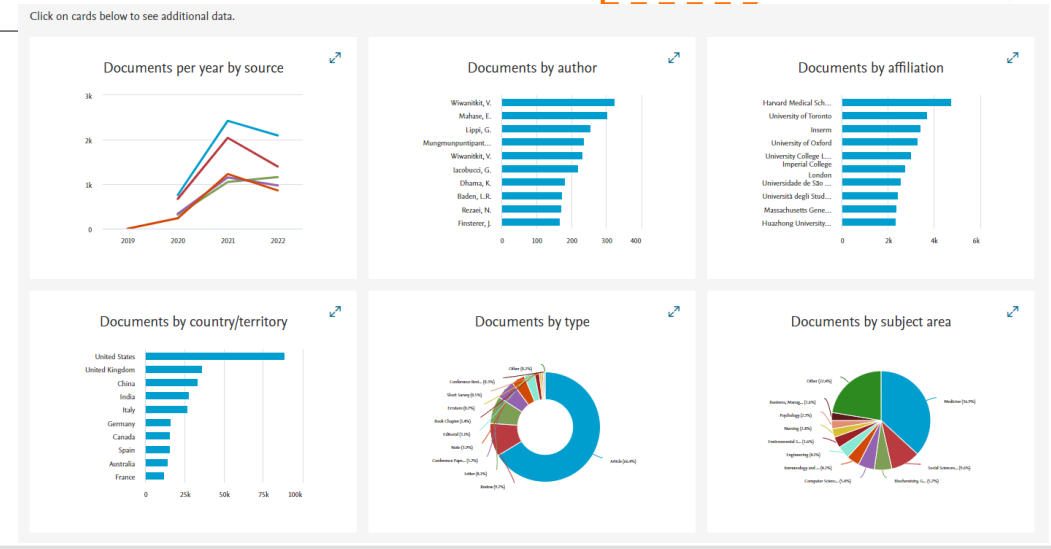
Search documents \*  
chatgpt

+ Add search field Add date range Advanced document search >

Reset Search

## Analyze search results

Analyze results



# Researcher Discovery



Researcher Discovery can help you find and connect with researchers from around the globe.

Start by entering keywords that relate to a research area, topic, or interest.

[About Researcher Discovery](#)

Enter keywords



Popular searches:

Covid-19 "Public health" "Social psychology" "Artificial intelligence" Cancer AND cell "Machine learning" Heart "Industry 4.0"  
"Climate change" Marketing

## Matching researchers for:

[About Researcher Discovery](#)

Enter keywords

"Industry 4.0"



## Results based on matching documents since 2017

### Refine by

#### Matching documents from

- This year
- Last 2 years
- Last 3 years

#### Country

Type country name

- Italy

[Export all results](#)

[About the metrics](#) Sort by

Author information

Number of matching documents

Total citations

**Rauch, Erwin**

Free University of Bozen-Bolzano, *Italy*

[Preview profile](#)

91

2557

**Matt, Domink T.**

Free University of Bozen-Bolzano, *Italy*

[Preview profile](#)

74

2303

**Luz Tortorella, Guilherme**

Universidade Federal de Santa Catarina, *Brazil*

65

3071



ELSEVIER

# Biography

Academic Staff

Academic-related Staff

Teaching Staff

Honorary Staff

## Cowling, Benjamin John



**Professor, Chair of Epidemiology**

**Division Head**

**Division of Epidemiology and Biostatistics**

MBE, FPPH

 3917 6711

 [bcowling@hku.hk](mailto:bcowling@hku.hk)

 <http://hub.hku.hk/cris/rp01326>

 PubMed

 ORCID: [Cowling, Benjamin John](#)

## Biography

Professor Benjamin Cowling joined the School of Public Health (SPH) at HKU in 2004. Prior to moving to Hong Kong, he graduated with a PhD in medical statistics at the University of Warwick (UK) in 2003, and spent a year as a postdoc at Imperial College London (UK). Professor Cowling has been the Head of the Division of Epidemiology and Biostatistics since 2013. He is responsible for teaching the introductory module in epidemiology on the MPH curriculum, and is the chairman of the Departmental Research Postgraduate Committee. Prof Cowling is a co-director of the WHO Collaborating Centre for Infectious Disease Epidemiology and Control at HKU SPH.

Prof Cowling's primary research focus is in infectious disease epidemiology. In recent years he has designed and implemented large field studies of influenza transmission in the community and the effectiveness and impact of control measures. His latest research has focused on the modes of respiratory virus transmission, influenza vaccination effectiveness, and immunity to infections at the individual and population level. He has strong links with China CDC, and the NIGMS-funded [Harvard Center for Communicable Disease Dynamics](#).

Professor Cowling is a fellow of the Royal Statistical Society and a Fellow of the UK Faculty of Public Health. He is the Editor-in-Chief of *Influenza and Other Respiratory Viruses*, and an Associate Editor of *Emerging Infectious Diseases*.

He has more than 500 publications listed in Scopus, including 66 articles with 66 or more citations (H-index of 66). Prof Cowling has received numerous awards including HKU Outstanding Young Researcher Award (2011), Croucher Senior Research Fellowship (2015), HKU Outstanding Researcher Award (2017), and RGC Senior Research Fellowship (2020). He was awarded an MBE in Queen Elizabeth II's 2021 birthday honours.

## Selected Publications

1. Ali, S. T., Wang, L., Lau, E., Xu, X. K., Du, Z., Wu, Y., Leung, G. M., & **Cowling, B. J.** (2020). Serial interval of SARS-CoV-2 was shortened over time by nonpharmaceutical interventions. *Science* (New York, N.Y.), 369(6507), 1106–1109. [[link](#)]
2. Leung, N., Chu, D., Shiu, E., Chan, K. H., McDevitt, J. J., Hau, B., Yen, H. L., Li, Y., Ip, D., Peiris, J., Seto, W. H., Leung, G. M., Milton, D. K., & **Cowling, B. J.** (2020). Respiratory virus shedding in exhaled breath and efficacy of face masks. *Nature medicine*, 26(5), 676–680. [[link](#)]
3. **Cowling, B. J.**, Ali, S. T., Ng, T., Tsang, T. K., Li, J., Fong, M. W., Liao, Q., Kwan, M. Y., Lee, S. L., Chiu, S. S., Wu, J. T., Wu, P., & Leung, G. M. (2020). Impact assessment of non-pharmaceutical interventions against coronavirus disease 2019 and influenza in Hong Kong: an observational study. *The Lancet. Public health*, 5(5), e279–e288. [[link](#)]
4. Li Q, Guan X, Wu P, ..., **Cowling BJ\***, Yang B, Leung GM, Feng Z (2020). Early Transmission Dynamics in Wuhan, China, of Novel Coronavirus-Infected Pneumonia. *New England Journal of Medicine*. 10.1056/NEJMoa2001316. [[link](#)]  
[IF 70.6 (2018), rank 1/60 medicine, general and internal]

# Scopus Author Profiles are unique representations of an author; they show identifiers, output information, and metrics



Scopus

Search Sources SciVal ? ? ? SZ

This author profile is generated by Scopus. [Learn more](#)

## Cowling, Benjamin John

The University of Hong Kong Li Ka Shing Faculty of Medicine, Hong Kong 8644765500 <https://orcid.org/0000-0002-6297-7154> [View more](#)

44,733 Citations by 34,370 documents | 708 Documents | 85 h-index [View h-graph](#) | [View all metrics >](#)

[Set alert](#) [Save to list](#) [Edit profile](#) [More](#)

### Document & citation trends



### Most contributed Topics 2018–2022

- ARIMA; Mathematical Modeling; COVID-19  
50 documents
- COVID-19; Human Influenza; Epidemic Model  
30 documents
- Nasopharyngeal Swabs; Serologic Tests; COVID-19  
30 documents

Analyze author output [Citation overview](#) [New](#) [View all Topics](#) [Beta](#)  
708 Documents Author Metrics Cited by 34,370 documents 93 Preprints 2,110 Co-Authors 77 Topics 5 Awarded Grants

### Identifiers

- Author ID
- ORCID
- Affiliation

### Output

- Output over time
- Subject area coverage

### Metrics

- h-index
- Citations
- And more





# Understand Topics & Author expertise

- Topic = a collection of documents with a **common focused intellectual interest**
- Topics are based on **clustering the citation network** of Scopus content and are **dynamic**
- Each document on the author profile is **assigned to a topic**

---

- An author's **5 most contributed Topics** are shown here
- There is a **full list of topics an author contributes to in the Topics tab**
- You can click on the title of the Topic to **open a panel** which shows additional detail eg representative documents in the topic and top authors.
- You can conduct further topic analysis in SciVal

**Cowling, Benjamin John**  
The University of Hong Kong Li Ka Shing Faculty of Medicine, Hong Kong | 8644765500 | <https://orcid.org/0000-0002-6297-7154>

Edit profile | Set alert | Add to author list | Potential author matches | Export to SciVal

**Document & citation trends**

Documents: 1990-2020 | Citations: 1990-2020

**Most contributed Topics 2015-2019**

- Schistosomiasis ; Helminths ; Preventive Chemotherapy (30 documents)
- Leprosy ; Erythema Nodosum ; Nodosum leprosum (29 documents)
- China ; HIV ; Workers FSWs (21 documents)

102 Documents | Cited by 234 documents | 96 Co-authors | **Topics**

**Topics**  
A Topic is a collection of documents with a common focused intellectual interest. Scopus publications are clustered into Topics based on direct citation analysis and researchers can be active in multiple topics. Learn more about Topics.

Topic	Author documents	Topic Field-Weighted Citation Impact
Schistosomiasis ; Helminths ; Preventive Chemotherapy	63	1.42
Leprosy ; Erythema Nodosum ; Nodosum leprosum	27	1.39
China ; HIV ; Workers FSWs	11	0.83
Supersymmetry ; Collisions ; Squark pair	5	1.16
Bacteriophages ; Bacteria ; Phage treatment ;	2	0.96
Tuberculosis ; Tuberculosis, Pulmonary ; Tuberculosis control	1	1.34
Powders ; Dry Powder Inhalers ; Fraction FPF	1	1.98
Mycobacterium tuberculosis ; Tuberculosis ; VII secretion	1	1.00
Tuberculosis ; Rifampin ; Concentration-time curve	1	1.18



# Go Deeper on the topic

ARIMA; Mathematical Modeling; COVID-19; (T.1102558)

Topic overview | Author documents

Representative documents

Top authors in this topic

Keyphrase analysis

Representative documents

Representative publications are very strongly linked with intended to give us a feel for the central research questions. They have many within-topic links and a high fraction of the articles are also relatively highly cited for their age.

Article

The incubation period of coronavirus disease 2019 in publicly reported confirmed cases: Estimation and comparison of data with the model. Lauer, S.A., Grantz, K.H., ... Lessler, J. *Annals of Internal Medicine*, 2020

Article

Open access

Substantial undocumented infection facilitates the early transmission of novel coronavirus (SARS-CoV-2). Li, R., Pei, S., ... Shaman, J. *Science*, 2020

ARIMA; Mathematical Modeling; COVID-19; (T.1102558)

Representative documents

Name
Zhao, Shi
He, Daihai
Chowell, Gerardo
Cowling, Benjamin Jol
Funk, Sebastian

Keyphrase analysis

Keyphrase analysis

Topic T.1102558 Analyze in Grants | part of Topic Cluster TC.1500 - COVID-19; SARS-CoV-2; Coronaviruses

## ARIMA; Mathematical Modeling; COVID-19

2018 to >2023

Summary | Institutions | Countries & Regions | Authors | Scopus Sources | Keyphrases

### Overall research performance

14,375	2.35
Scholarly Output	Field-Weighted Citation Score
302,260	269,554
Views Count	Citation Count

99.975

Topic Prominence percentile

Calculation breakdown

95.751

In 2022

Prominence combines 3 metrics to indicate the momentum of the Topic.

Citation Count	Scopus Views Count	Average CiteScore
569	2,526	9.7

# Keep track of an Author

Lee, Hana

College of Pharmacy, Seoul, South Korea Show all author info

38061483500 Connect to ORCID Is this you? Link Mendeley profile

Edit profile **Set alert** Save to list Potential author matches Export to SciVal

Metrics overview

- 59 Documents by author
- 882 Citations by 818 documents
- 15 h-index: View h-graph

Document & citation trends

Most contributed Topics 2015-2021

- Immunoglobulins; Leukocyte; Immunoreceptor Tyrosine Based Inhibition Motif (4 documents)
- Kelch Like ECH Associated Protein 1; Transcription Factor Nrf2; Antioxidant Responsive Element (3 documents)
- Caenorhabditis Elegans; Tylose; Proteostasis (3 documents)

59 Documents Cited by 818 Documents 170 Co-Authors Topics

Export all Save all to list Sort by Date (newest)

View list in search results format

View 1929 references

**Set document alert**

Article - Open Access  
17 $\beta$ -estradiol reduces inflammation and modulates antioxidant enzymes in colonic epithelial cells  
4 Cited by  
Son, H.J., Kim, N., Song, C.-H., ...Lee, H.-N., Surh, Y.-J.  
*Korean Journal of Internal Medicine*, 2020, 35(2), pp. 310-319  
View abstract View at Publisher Related documents DOC XML SOLR JSON

Erratum - Open Access  
Corrigendum to 'Effects of 17 $\beta$ -estradiol on colorectal cancer development after azoxymethane/dextran sulfate sodium treatment of ovariectomized mice'  
0 Cited by  
(*Biochemical Pharmacology* (2019) 164 (139–151), (S0006295219301467),



Set alert

Lee, Hana

(Author Identifier 38061483500)

Select type of alert

Document alert  Authors citation alert

Name of alert \*

Lee, Hana

Email address \*

jennifersmith82185@gmail.com

Separate multiple email addresses by a semicolon, comma, and space.

Frequency

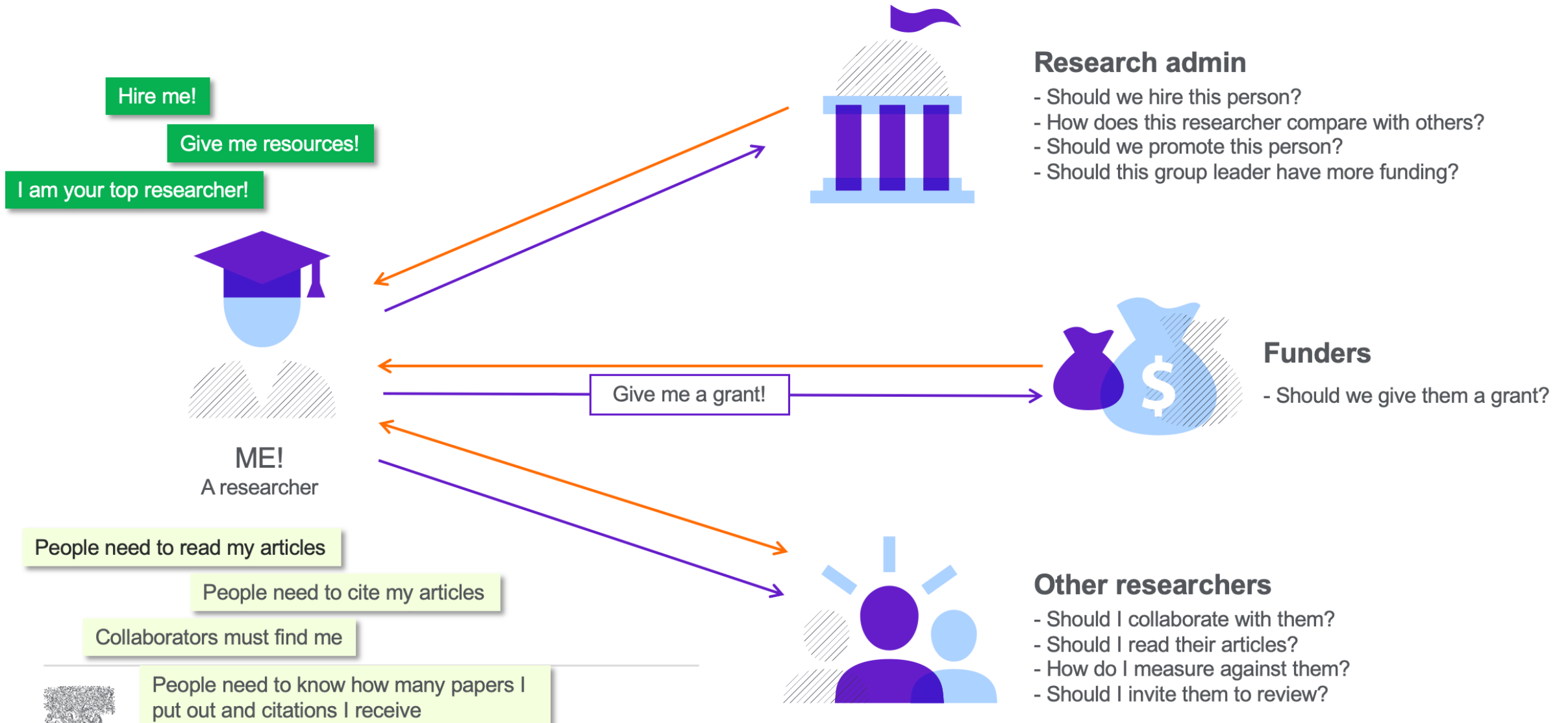
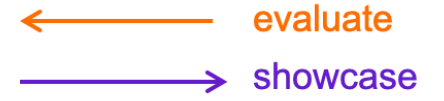
Every week on Friday

Close Set document alert

Request author notifications when:

- New documents appear in Scopus
- Work receives new citations

# Value of author profiles



# Author profile generation

Power of

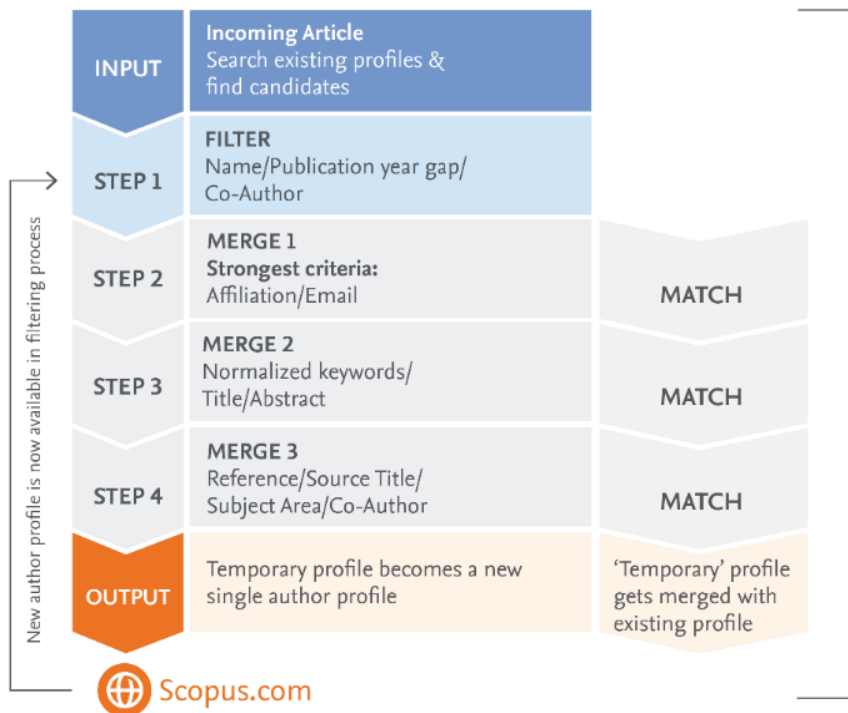
**Scopus**

**Multi-layered Feedback Process**



The **Scopus Author Identifier** uses the most powerful **algorithmic data processing** in the industry to group papers to an individual's profile with a high degree of accuracy based on matching of name, email, affiliation, subject area, citations, co-authors, etc.

## New Article Algorithmic Process



**Scopus** uses a combination of automated and curated data to automatically build Author Profiles, which power Elsevier's Research Intelligence portfolio.



## ORCID

An ORCID is a 16-digit number which will usually be presented in the form of a web address that leads to the researcher's profile.

[HTTP://ORCID.ORG/0000-0002-8534-598](http://ORCID.ORG/0000-0002-8534-598)



# Check and curate your profile

- Your preferred **name**
- Connect your **ORCID**
- Your **affiliation**
- ... Show **more info** - affiliation history and subject area

**Cowling, Benjamin John**

The University of Hong Kong Li Ka Shing Faculty of Medicine, Hong Kong 8644765500 <https://orcid.org/0000-0002-6297-7154> [View more](#)

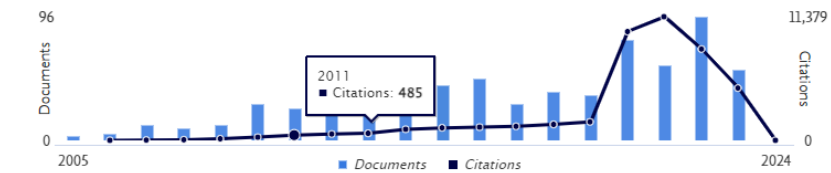
44,733 Citations by 34,370 documents | 708 Documents | 85 h-index [View h-graph](#) | [View all metrics >](#)

[Set alert](#) [Save to list](#) [Edit profile](#) [More](#)

- If anything can be more accurate, **edit it**
- Set document and citation **alerts**
- Review potential **author matches**
- Export author to **SciVal**

Your **documents**

Document & citation trends



Most contributed Topics 2018–2022 [View all Topics](#)

- ARIMA; Mathematical Modeling; COVID-19**  
50 documents
- COVID-19; Human Influenza; Epidemic Model**  
30 documents
- Nasopharyngeal Swabs; Serologic Tests; COVID-19**  
30 documents

**Area of expertise**

Analyze author output [Citation overview](#) [Author Metrics](#) [New](#) [708 Documents](#) [Cited by 34,370 documents](#) [93 Preprints](#) [2,110 Co-Authors](#) [77 Topics](#) [5 Awarded Gr.](#)

Your **citations**

708 Documents

[Export all](#) [Save all to list](#)

Article

Longitudinal monitoring reveals the emergence and spread of bla<sub>GES-5</sub>-harboring carbapenem-resistant *Klebsiella quasipneumoniae* in a Hong Kong hospital wastewater discharge line

Liu, X., Wong, M.K.L., Zhang, D., ...Lam, T.T.-Y., Tun, H.M.

Sort by [Date \(newest\)](#)

0 Citations

**Check your co-authors**

[Author Position](#)

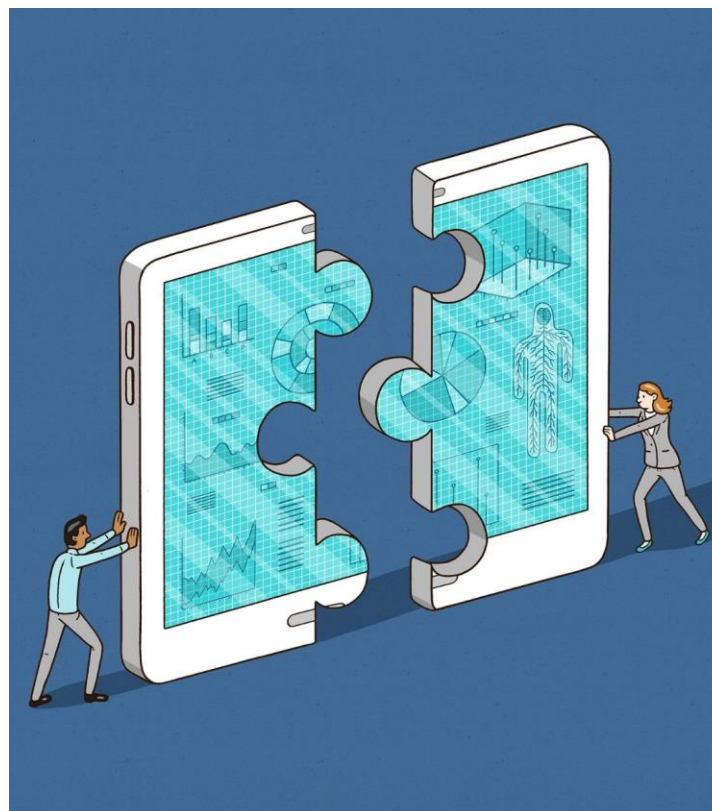
# Edit your profile

You can edit a profile from:

1. Author Details Page (clicking on “Edit profile”)
2. Author Search Results Page (clicking on “Request to merge authors”)

Consult the Author Feedback Wizard FAQ for more information:

[https://service.elsevier.com/app/answers/detail/a\\_id/34288/](https://service.elsevier.com/app/answers/detail/a_id/34288/)



- **Merges**
- **Splits**
- **Missing content**
- **Overrides** of profile information : preferred name, email, latest affiliation

# Navigate to Author Profiles

## By Author Search

Search Sources Lists SciVal Quick Link Test

### Author search

Compare sources

Documents  Authors  Affiliations [Advanced](#) [Search tips](#)

Author last name  Author first name

e.g. Smith e.g. J.L.

Affiliation   Show exact matches only

e.g. University of Toronto

ORCID

e.g. 1111-2222-3333-4444

[Help improve Scopus](#)

**About Scopus**  
What is Scopus  
Content coverage  
Scopus blog  
Scopus API  
Privacy matters

**Language**  
日本語に切り替える  
切换到简体中文  
切换到繁體中文  
Русский язык

**Customer Service**  
Help  
Contact us

## By Topical Area

### 82,906 document results

TITLE-ABS-KEY (neuroscience)

[Edit](#) [Save](#) [Set alert](#)

Search within results... [Documents](#) [Patents](#) [View Mendely Data \(12801\)](#) [FSQSIM ACCT level link](#)

[Stay up to date!](#)  
Get notified when new documents are added to this topic search

Show all abstracts Sort on: Date (newest)

Refine results

All  Export  Download  View citation overview  View cited by  Save to list

Access type

Open Access (25,503)

Other (57,403)

Year

2021 (42)

2020 (4,906)

2019 (5,565)

2018 (5,619)

2017 (5,147)

[View more](#)

Author name

Decety, J. (87)

Kalueff, A.V. (83)

Panksepp, J. (79)

Friston, K.J. (72)

Document title	Authors	Year	Source	Cited by
1 The dimensionality of neural representations for control <i>Open Access</i>	Badre, D., Bhandari, A., Kegllovis, H., Kikumoto, A.	2021	Current Opinion in Behavioral Sciences 38, pp. 20-28	0
View abstract <a href="#">Cite</a> <a href="#">iCite</a> <a href="#">View at Publisher</a> <a href="#">Related documents</a>				
2 Saccharomyces cerevisiae in neuroscience: How unicellular organism helps to better understand prion protein? <i>Open Access</i>	Ishikawa, T.	2021	Neural Regeneration Research 16(3), pp. 489-495	0
View abstract <a href="#">Cite</a> <a href="#">iCite</a> <a href="#">View at Publisher</a> <a href="#">Related documents</a>				
3 Microglial activation and adult neurogenesis after brain stroke <i>Open Access</i>	Dos Santos, I., Dias, M., Gomes-Leal, W.	2021	Neural Regeneration Research 16(3), pp. 456-459	0
View abstract <a href="#">Cite</a> <a href="#">iCite</a> <a href="#">View at Publisher</a> <a href="#">Related documents</a>				
4 A cross-disciplinary comparison of multimodal data fusion approaches and applications: Accelerating learning through trans-disciplinary information sharing	Bokade, R., Navato, A., Ouyang, R., (...), Ostadabbas, S., Mueller, A.V.	2021	Expert Systems with Applications 165, 113885	0
View abstract <a href="#">Cite</a> <a href="#">iCite</a> <a href="#">View at Publisher</a> <a href="#">Related documents</a>				



# Scopus AI Demo

# Scopus<sup>®</sup> AI

Change the way you view knowledge

The screenshot displays the Scopus AI interface. At the top, the Scopus logo is on the left, and navigation links for Search, Sources, SciVal, and user icons are on the right. Below the header, the text 'Start exploring' is followed by the tagline 'Discover the most reliable, relevant, up-to-date research. All in one place.' A navigation bar includes links for Documents, Authors, Researcher Discovery, Affiliations, and Scopus AI Alpha (which is highlighted). A search bar contains the query 'Influence of seismology on civil engineering designs'. Below the search bar, a section titled 'Learn with AI-generated overviews based on documents since 2018' shows an AI-generated overview for the search query. This overview includes a main text block, a 'Show all references' link, a 'Rate this summary' link, and three AI-generated questions. To the right of the text is a mind map with 'Seismology' at the center, branching into 'Earthquake monitoring', 'Geotechnical Engineering', 'Earthquakes', 'Structural analysis', 'Civil Engineering', and 'Seismic Design'. The 'Earthquakes' node further branches into 'Damage Study', 'Impact', 'Research', 'Sustainability', and 'Innovation'. A circled number '4' is placed next to the 'Earthquake monitoring' node.

1 Influence of seismology on civil engineering designs

2 Influence of seismology on civil engineering designs

Seismology plays a crucial role in civil engineering designs. It helps in understanding the behavior of engineering structures under earthquake effects and determining the location of seismic stations 1. Seismic waves' velocity is important for defining suitable construction locations and monitoring seismic activity efficiently 2. Seismology also contributes to the safety, sustainability, and resilience of civil engineering structures in seismic areas 3. It aids in the innovation and design of exceptional structures in earthquake-prone areas 4. Additionally, seismological research provides valuable insights into crustal architecture, geodynamics, and earthquake source parameters, benefiting engineering seismology applications 5. Overall, seismology significantly influences civil engineering designs by enhancing safety, efficiency, and resilience in earthquake-prone regions 2 3 5.

Show all references Rate this summary

3 How does seismology influence the design of tall buildings in earthquake-prone areas?

3 What role does seismology play in the design of bridges to ensure their stability during seismic events?

3 How does seismology impact the construction of underground structures like tunnels and subway systems?

Share feedback

4

- Earthquake monitoring
- Geotechnical Engineering
- Earthquakes
  - Damage Study
  - Impact
  - Research
  - Sustainability
  - Innovation
- Structural analysis
- Civil Engineering
- Seismic Design

# Where to find more information:

Learn and connect with us via the Scopus blog, newsletter, Twitter, infosite & more!

Blog.Scopus.com

Scopus<sup>®</sup>

Scopus is the largest abstract and citation database of peer-reviewed literature: scientific journals, books and conference proceedings.

All Posts Product Releases Tips & Tricks Webinars Get Involved

PlumX Metrics now on Scopus: Discover how others interact with your research

Submitted by Susannah Beatty... on Wed, 07/26/2017 - 22:12

PlumX Metrics – with five categories of metrics – is now the primary source of article-level metrics on Scopus alongside the Scopus citation count (along with percentile benchmarking) and Field-weighted citation impact.

How to get to the Article Metrics module on Scopus:

You can find the Article Metrics module on a Scopus Document details page, where a sidebar highlights the corresponding article-level metrics. Clicking on "View all metrics" opens a more detailed Metrics page, displaying all available metrics and

Search this blog

Get our newsletter

Subscribe

Follow Scopus

Twitter.com/Scopus

YOUR DISCOVERY AWAITS

ELSEVIER | Scopus<sup>®</sup>

ELSEVIER

Edit profile

Scopus  
@Scopus

Largest abstract & citation database of peer-reviewed literature. Bibliometric tools track, analyze & visualize research. By Elsevier. [blog.scopus.com](http://blog.scopus.com)

Amsterdam [elsevier.com/solutions/scopus...](http://elsevier.com/solutions/scopus...) Joined January 2009

568 Following 42K Followers

Tweets Tweets & replies Media Likes

Librarian toolkit

Scopus has you covered

Looking to find & evaluate the right research?

Scopus

Newsletter

ELSEVIER

Share [f](#) [in](#) [t](#) [v](#) [e](#)

Scopus<sup>®</sup>

Scopus Newsletter: September 2017

In this issue, get the latest facts and tips about Scopus to share with your researchers and students in the new academic year.

Scopus Content: High quality, historical depth and expert curation

To find the latest information about Scopus content, from the number of records to the content selection process, visit our refreshed information page. For a more in depth look into Scopus content

High-quality Data

69+ M records

22,800+ peer-reviewed journals

3,600+ 100+ issues titles

286+ 1000+ journals Books

Scopus info site: [elsevier.com/scopus](http://elsevier.com/scopus)

ELSEVIER

About Elsevier Products & Solutions Services Shop & Discover Search

Scopus

Data | Curated. Connected. Complete.

Contact sales >

Already a Scopus customer?

If you already have a Scopus account, please click the link below to sign in.

Scopus sign in >

Keep your eye on global research

Discover how Scopus delivers insights that drive better decisions, actions and outcomes.

View the fact sheet (PDF, oxb) <

Fueling the future of research

The superior quality and coverage of Scopus content empowers research performance at your institution.

Bring Scopus to your institution >

Home > All Solutions > Scopus

Why choose Scopus How Scopus works Who uses Scopus Learn & support Resource Library

The world of scientific research is more demanding than ever before

Whether it's to discover funding information, advance your career, make strategic decisions, prove ROI or simply to save time, being able to quickly access and make sense of emerging trends, find collaborators and discover

<https://www.elsevier.com/>